

# F6

Blower Kit  
Instruction Sheet

## ASSEMBLY INSTRUCTIONS

### Step 1.

**THE BLOWER ASSEMBLY MUST BE DISCONNECTED FROM THE SOURCE OF ELECTRICAL SUPPLY BEFORE ATTEMPTING THE INSTALLATION.**

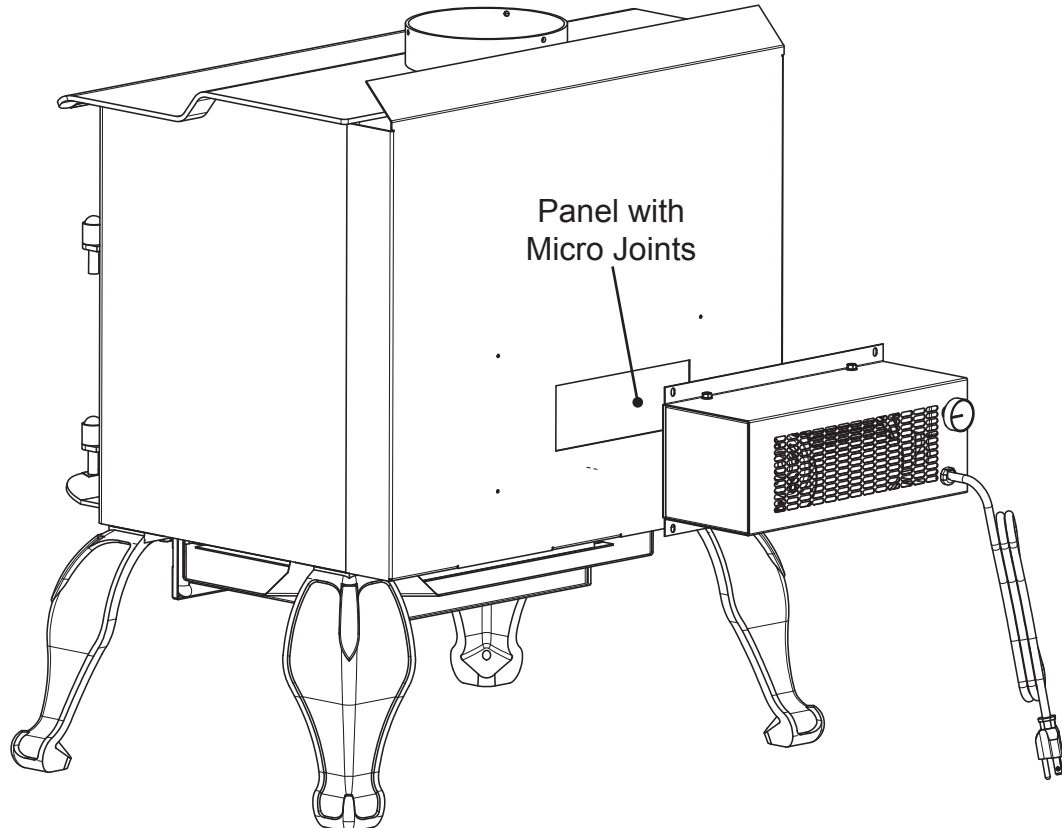
With pliers, cut the 6 microjoints and remove panel (a). Note: Discard the panel.

### Step 2.

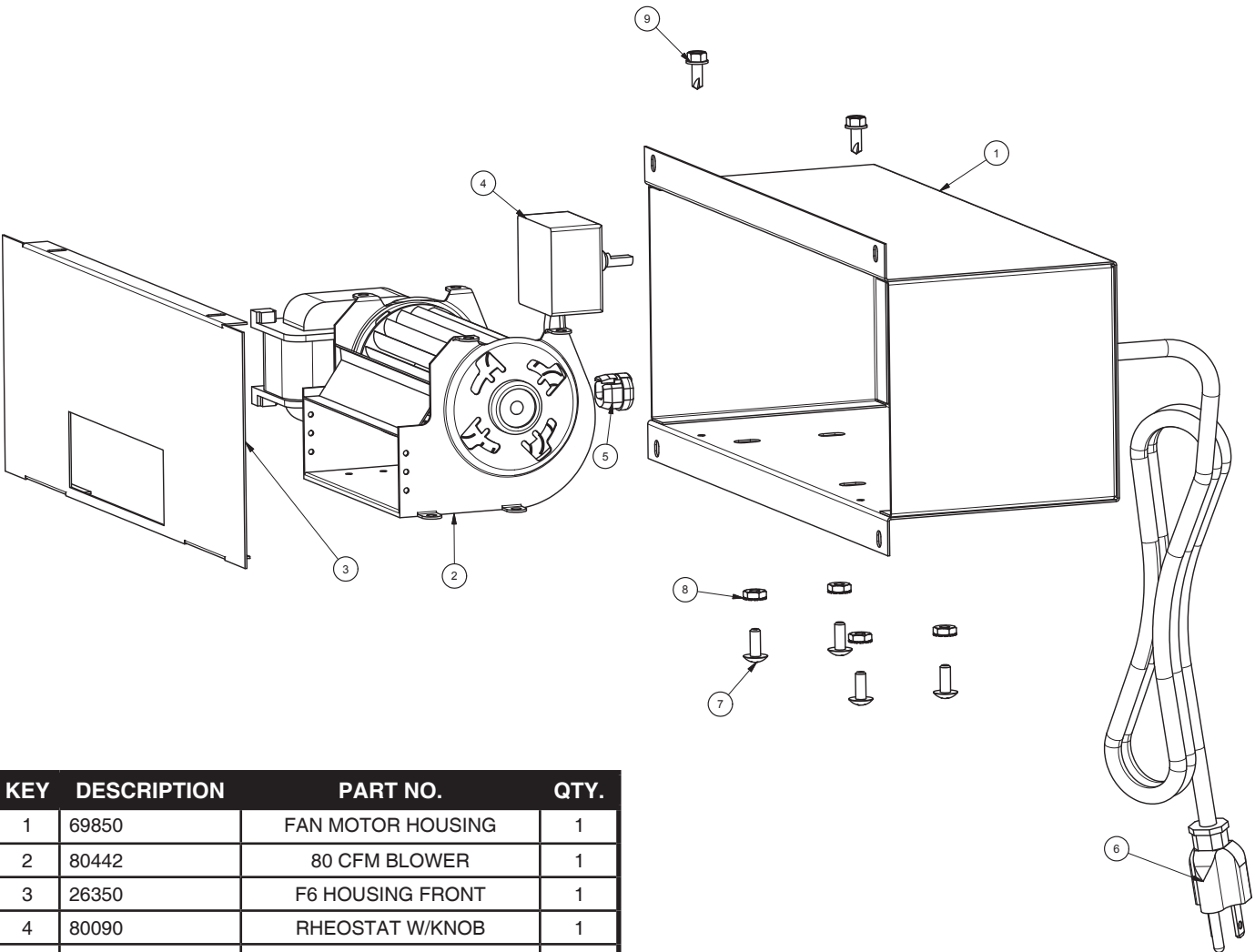
Fix the assembly to the back of the stove with the four screws provided.

**THE BLOWER ASSEMBLY IS INTENDED FOR USE ONLY WITH A STOVE THAT IS MARKED TO INDICATE SUCH USE.**

**DO NOT ROUTE THE SUPPLY CORD NEAR OR ACROSS HOT SURFACES!**



# F6 Parts and Parts List



KEY	DESCRIPTION	PART NO.	QTY.
1	69850	FAN MOTOR HOUSING	1
2	80442	80 CFM BLOWER	1
3	26350	F6 HOUSING FRONT	1
4	80090	RHEOSTAT W/KNOB	1
5	80109	STRAIN RELIEF	1
6	80232	SUPPLY CORD	1
7	83005	10-24X1/2 MS TR PH FL BLK	4
8	83244	10-24 UNC KEP NUT	4
9	83343	#10x1/2 HX HD DP OX BLACK	4

## Wiring Schematic

